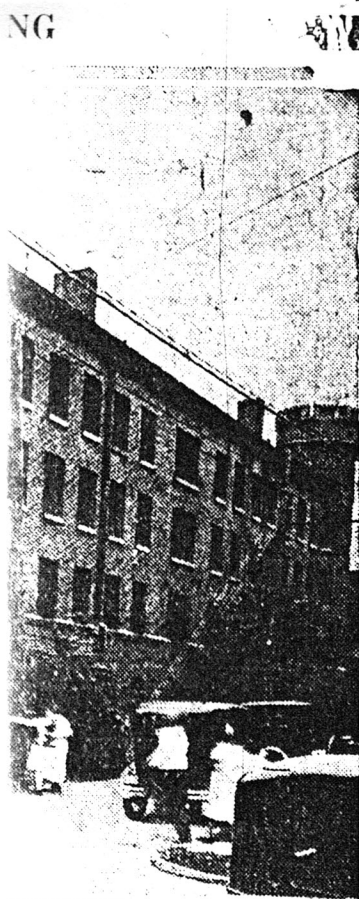


Monday Aug 11, 1930  
 # 203  
 Princeton Democrat  
 P-1

ST—PHONE NO. 9. SEVENTIETH YEAR.  
 telephones No. 9 and 917. PRICE THREE CENTS



mob of men and women hanged two  
 Arrow points to window from which  
 shot out under the bodies of the victims  
 (International Ill. News Photo)

## DRAW POSITIONS IN LABOR DAY PARADE LINEUP

**BUILDING TRADES, SHOPCRAFTS,  
 MINERS, MISCELLANEOUS, AND  
 FARM BUREAU, IN ORDER—  
 PRINCETON LEGION BAND EN-  
 GAGED.**

At a meeting of union labor representatives from over southern Indiana, held Sunday afternoon in the Princeton C. I. U. hall, plans for the great Union Labor Day celebration in Princeton on Monday, Sept. 1, were advanced, with drawing of positions in the big parade to be held on the morning of that day.

The parade will be in five big divisions—building trades first, shopcrafts second, miners third, miscellaneous locals, fourth, and Farm Bureau fifth.

The building trades will line up in the following order: Carpenters, Princeton; carpenters, Boonville; carpenters, Oakland City; electricians, Princeton; bricklayers, Princeton; plasterers, Princeton.

The shopcrafts will arrange their locals in line as they desire in the second division.

The miners locals will lineup in the following order: Petersburg No. 5122; Boonville 5604; Somerville 5123; Boonville 1244; Francisco 3457; Boonville 3437; King Station 5584; Elberfeld 114; Somerville 3345; Oakland City 352; Winslow 1396; Enos 5179; Buckskin 4149; Winslow 4343; Boonville 5065; Ft. Branch 2777.

The miscellaneous organizations will line up with painters, butchers and barbers, first, second, third and fourth, respectively.

The Farm Bureau organization will comprise the fifth parade division. Princeton American Legion Band has been engaged for the Labor Day celebration. The band, Prof. Irvin L. Oster, director, will head the morning parade and will furnish concert music and play for free acts at the Gibson county fairgrounds afternoon and evening of Labor Day.

## GRAND JURY GIVES TEN INDICTMENTS TO CIRCUIT COURT

**WORK WAS NOT COMPLETED UN-  
 TIL LATE HOUR SATURDAY  
 NIGHT—FURTHER ACTION TO  
 COME UP NEXT TERM COURT.**

The Gibson county grand jury which was in session last week during the adjourned May term of the Gibson circuit court made their report in open court Saturday night shortly before 12 o'clock. Ten indictments were returned by the jury.

The jury received instructions from Judge Smith in the circuit court room last Monday morning. The jury was instructed to investigate two matters, one of which was disposed of by Prosecutor Wilson in affidavits. This was a situation affecting a young girl.

The second matter the court instructed the jury to investigate was the alleged misuse of public funds by certain officials in Gibson county.

Names of persons indicted will not be made public until after their arrest and bond is given.

The report returned by the jury merely stated that 10 indictments had been returned, giving the numbers as they appeared on the criminal docket. The jury did not visit the county institutions, due to the fact that two grand juries in the past year viewed and reported on them. The law requires that at least one jury visit and report on the county institutions once a year.

The report was signed by Finis Trippet, foreman of the jury.

Members of the grand jury were: Conrad C. Johnson, Montgomery township; C. M. Douglas, Union; Atlee K. Carter, Barton; Harvey E. Woods, Patoka; Milton J. Duncan, Columbia; Finis Trippet, White River.

### Officials Not Indicted.

If justice to the officials whose names were connected with a recent article published before the grand jury convened, it is only fair to state that none of the indictments of the grand jury concerned these officials, Clyde McGary, police judge, Princeton; Bartlet Turpin, trustee Washington township; Albert R. Mans, trustee Center township; Chas. Meiser, trustee Barton township.

WEDDINGS  
 SHIPP—WARD  
 Mr. and Mrs. James Shipp announce

**GREATER ST. LOUIS  
 LESS THAN TWO  
 DAYS FROM RECORD**